



Public Health  
England



# Annual Health Protection Profile for Harrow, 2014

Dr Claude Seng Consultant in Health Protection,  
NWLondon Health Protection Team, PHE  
Carole Furlong, Consultant in Public Health, Harrow Council



# Introduction

Health protection seeks to prevent or reduce the harm caused by communicable diseases and minimise the health impact from environmental hazards such as chemicals and radiation. As well as major programmes such as the national immunisation programmes and the provision of health services to diagnose and treat infectious diseases, health protection involves planning, health surveillance and response to incidents and outbreaks.

The new health protection duty of local authorities under regulation 8 of the Local Authorities (Public Health Functions and Entry to Premises by Local Healthwatch Representatives) Regulations 2013, made under section 6C of the National Health Service Act 2006 (“NHS Act 2006”) (as inserted by section 18 of the Health and Social Care Act 2012), which came into force on the 1st of April 2013 (“6C effectively for the protection of the Regulations”)<sup>3</sup>

The 6C Regulations provide for each local authority to “provide information and advice to every responsible person and relevant body within, or which exercises functions in relation to the authority’s area, with a view to promoting the preparation of appropriate local health protection arrangements (“health protection arrangements”), or the participation in such arrangements, by that person or from body”.

This report gives an annual update on health protection issues facing Harrow. It gives a snapshot of four topics:

- Infectious diseases and outbreaks;
- Immunisation;
- TB;
- Sexually Transmitted Infections; and
- HIV.



Public Health  
England

# Infectious diseases

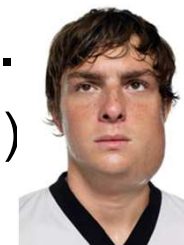


# Infectious Diseases in Harrow

The total number of infectious diseases reported from Harrow to the NWL health protection team was higher in 2014 (433) compared with 2013 (278).



- A near 3-fold increase in scarlet fever notifications (52 vs 19)
- A slight reduction of mumps notifications (39 vs 41) in 2014, compared to 2013 .
- Salmonellosis (42 in 2014, 20 in 2013)
- Shigellosis (7 in 2014, 8 in 2013)
- VTEC E.coli (0 in 2014, 1 in 2013)



- Reduction in the number of reported measles cases in Harrow (8 cases reported in 2014, 14 cases reported in 2013)



## Health Protection Incidents and Outbreaks in Harrow

- In 2014 there were 17 health protection related incidents and outbreaks in Harrow, reported to the NWL Health Protection Team.
- Most of these were associated with schools, care homes, hospitals, workplace.
- The causes of incidents and outbreaks are shown in the table.
- Food borne outbreaks are also followed up by the council's Environmental Health Team.

Norovirus	3
Mycobacterium tuberculosis complex	3
Influenza / Flu-like illness	2
Scabies mite	2
Salmonella spp, unspecified	1
Hepatitis A virus	1
Shigella spp	1
Mycobacterium spp, unspecified	1
Varicella-zoster virus	1
Clostridium perfringens	1
Cold storage	1

Source: HPZone



Public Health  
England

# Immunisation



# Immunisation Coverage in Harrow

**Immunisation coverage in Harrow at 12 m,  
Q3 2014**

	12m DTaP/ IPV/ Hib %	12m MenC %	12m PCV %
Harrow	92.1		90.7
London	90.0	92.7*	90.3
England	94.1	95.5*	94.0

**Immunisation coverage in Harrow at 24 m  
Q3 2014**

	24m DTaP/ IPV/ Hib %	24m PCV B %	24m Hib MenC %	24m MMR 1 %
Harrow	93.0	84.9	88.3	89.6
London	92.3	85.5	86.1	86.0
England	95.6	91.9	91.8	91.8

\* Q1 data available only for London & England for 12m MenC



# Immunisation Coverage in Harrow

Table 1. Immunisation coverage in Harrow at 5 y, Q3 2014

	5y_ DTaP/ Pol%	5y_ MMR1 %	5y_ MMR2 %	5y_ DTaP/ IPV B %	5y_Hib MenC B
Harrow	<u>89.7</u>	<u>92.0</u>	<u>82.4</u>	<u>79.6</u>	<u>88.3</u>
London	92.8	91.2	80.5	78.0	87.3
England	95.8	94.6	88.5	88.0	92.7





# Immunisation coverage in Harrow

## Seasonal influenza immunisations September 2014 to January 2015

### Over 65s:

Harrow - **70.2%** coverage

London average - **69.2%**

National average - **72.8%**

### At-risk groups: 6 m to 65 yrs

Harrow - **50.5%**,

London average - **49.8 %**

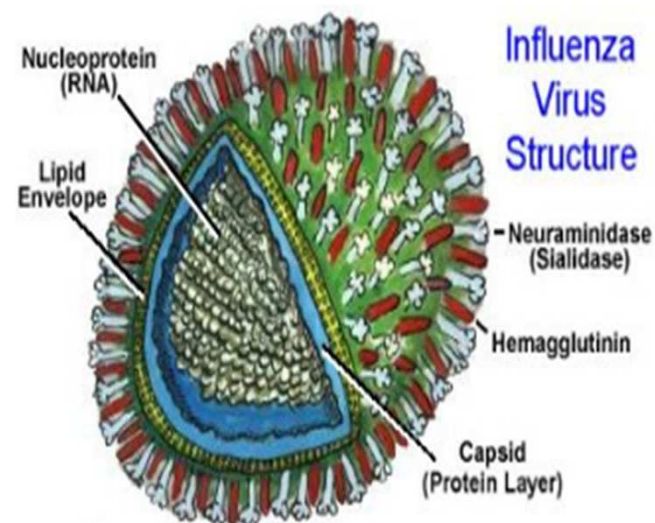
National average - **50.3 %**

### At Risk Group: pregnant women

Harrow - **34.6%**

London average - **39.9%**

England average - **44.1%**





# Immunisation coverage in Harrow

## Human Papilloma Virus (HPV) vaccine uptake (2013/14) –

- Coverage of HPV vaccine for all 3 doses in Harrow (83.2%) has remained stable compared to coverage in 2012 (84.51%)
- It is still the second highest NWL and is higher than the London average (80.0%) and slightly lower than the England average (86.7%).
- School nursing teams are working hard to ensure optimal coverage of this important vaccine.





# Immunisation Action Plan

The local authority does not have responsibility for commissioning or delivery of immunisation programmes but it does have a role in assurance.

A detailed action plan has been drawn up for Harrow by the NHS England lead for immunisation in collaboration with the local authority, PHE, Harrow CCG and London Northwest Healthcare Trust.

NHSE will be presenting a report on immunisation to the Health and Wellbeing Board at a future date.



Public Health  
England

# Tuberculosis

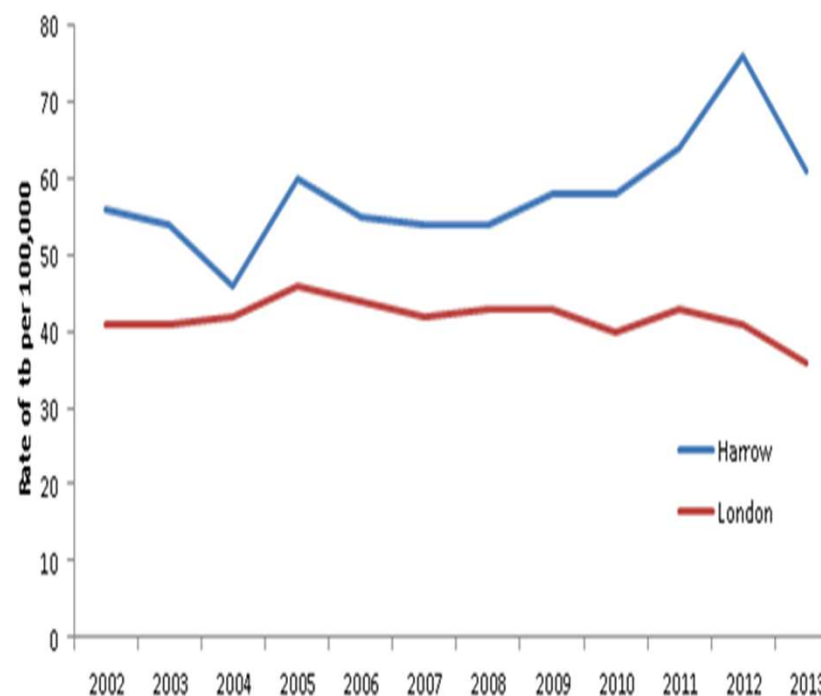


# Tuberculosis in Harrow– 2013 data

	Number of new cases	Incidence Rate per 100,000
Harrow	148	60.8
London	1052	35.7 (Range 6 – 107)
England	3001	12 (Range 0 - 107)

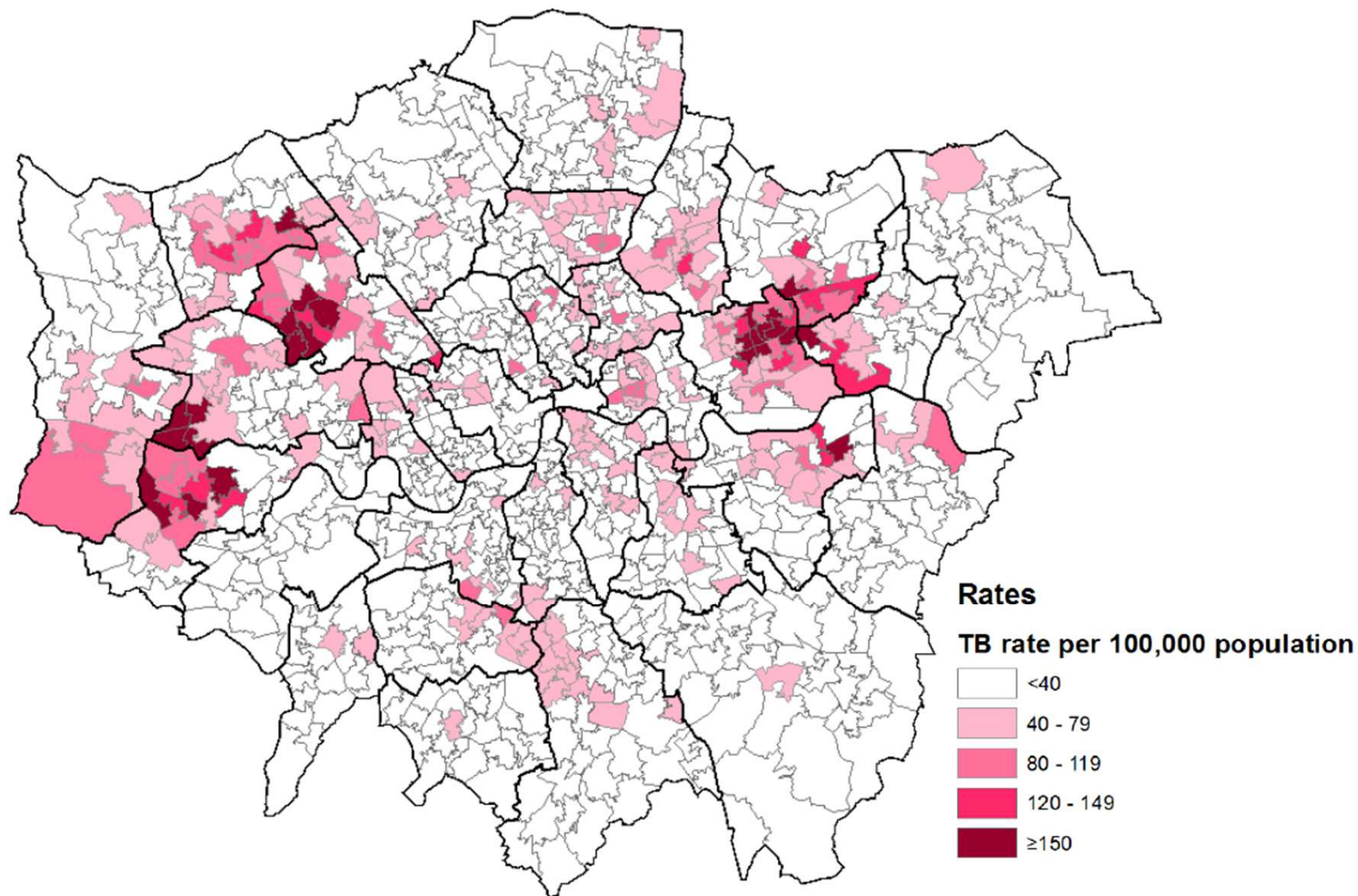
- 48% of cases in NWL had pulmonary involvement
- 4.7% of TB cases had social risk factors
- A small number of TB cases were infectious

Annual TB incidence rate





## TB incidence rate by Middle Super Output Area:2013





# What are we doing about TB locally?

Three main areas to improve control of TB in Harrow:

- Prompt identification of active and latent cases of disease
  - Awareness of TB in the communities
  - Awareness of TB by council staff
  - We worked closely with TB Alert!, a national charity.
  - Small grants for community groups
  - World TB Day in March
- Supporting patients to successfully complete treatment
  - Commissioned by CCG
  - Completion of treatment: local rates are good and those in greater need get additional supervision.
- Preventing new cases of disease occurring:
  - Contact tracing of cases of TB
  - High risk groups: mobile x-ray unit visits the drug and alcohol service
  - CCG has applied for funding for latent TB screening of new registrations from high risk countries



Public Health  
England

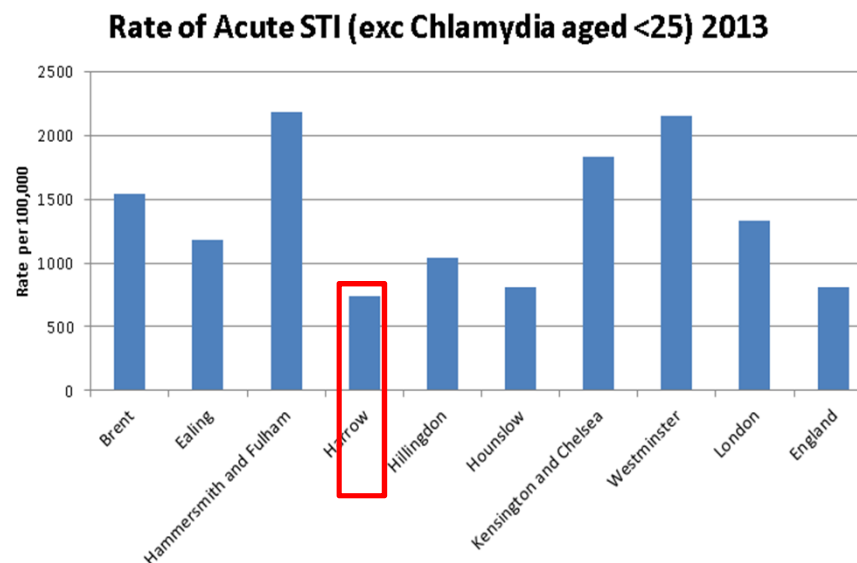
# Sexually Transmitted Infections and HIV





## Sexually Transmitted Infections in Harrow, 2013

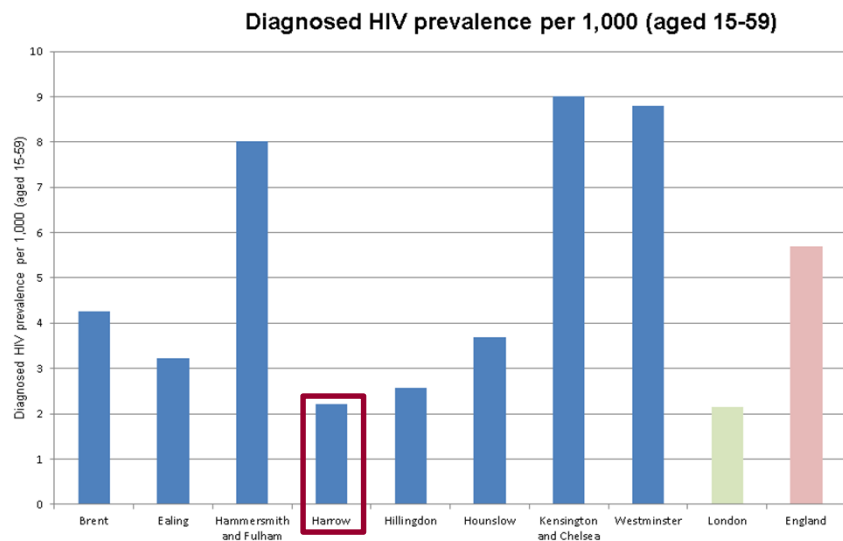
- Chlamydia detection rates in young adults aged 15-24 in Harrow are considerably lower than the England average (1155 compared with 2016) and one of the lowest in NWL
- 1542 acute Sexually Transmitted Infections (STI) were diagnosed in Harrow residents in 2013 Rate of 634 per 100,000
- Acute STI Rate (excluding Chlamydia aged <25)
  - 740 per 100,000 residents in Harrow
  - London rate = 1332/100,000
  - England rate = 810.9/100,000.





# HIV in Harrow 2013 Data

- Harrow has one of the lowest levels of HIV per 1000 in NW London 2013
- The main route of acquiring HIV infection in this group is through heterosexual sex



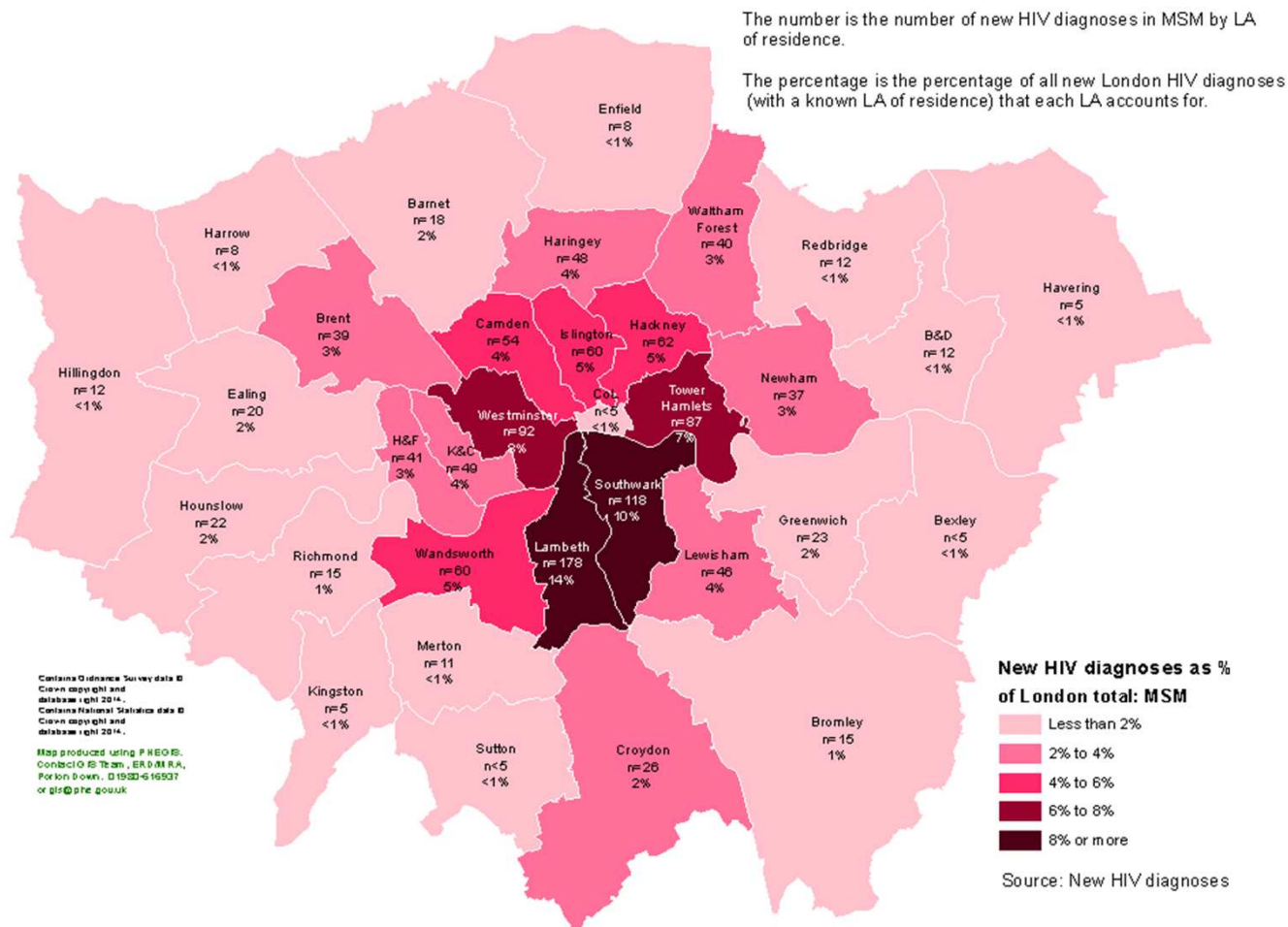
HIV diagnosed prevalence rate / 1,000 aged 15-59 2013 Benchmarked against goal: <1 1 to 2 ≥2

Area	Count	Value
England	68,664	2.14
London region	31,393	5.69
Havering	257	1.82
Kingston upon Thames	225	2.10
Harrow	330	2.21
Richmond upon Thames	279	2.38
Sutton	297	2.48
Bromley	468	2.50
Bexley	355	2.53
Hillingdon	465	2.58
Redbridge	498	2.78
Barnet	686	3.00
Ealing	715	3.23
Hounslow	632	3.70
Merton	557	4.23
Brent	886	4.25
Enfield	844	4.26
Waltham Forest	843	4.84
Wandsworth	1,114	5.05
Croydon	1,175	5.07
Greenwich	1,029	5.98
Barking and Dagenham	720	6.07
Tower Hamlets	1,260	6.39
Newham	1,432	6.57
Haringey	1,241	6.88
Hammersmith and Fulham	1,008	8.01
Hackney	1,467	8.11
Lewisham	1,578	8.18
Camden	1,303	8.26
Islington	1,328	8.47
Westminster	1,382	8.80
Kensington and Chelsea	928	9.00
City of London	57	10.86
Southwark	2,692	12.63
Lambeth	3,342	14.70

Source: Public Health England



## Number of new HIV diagnoses in MSM by London LA of residence, 2012 (HANDD Database)

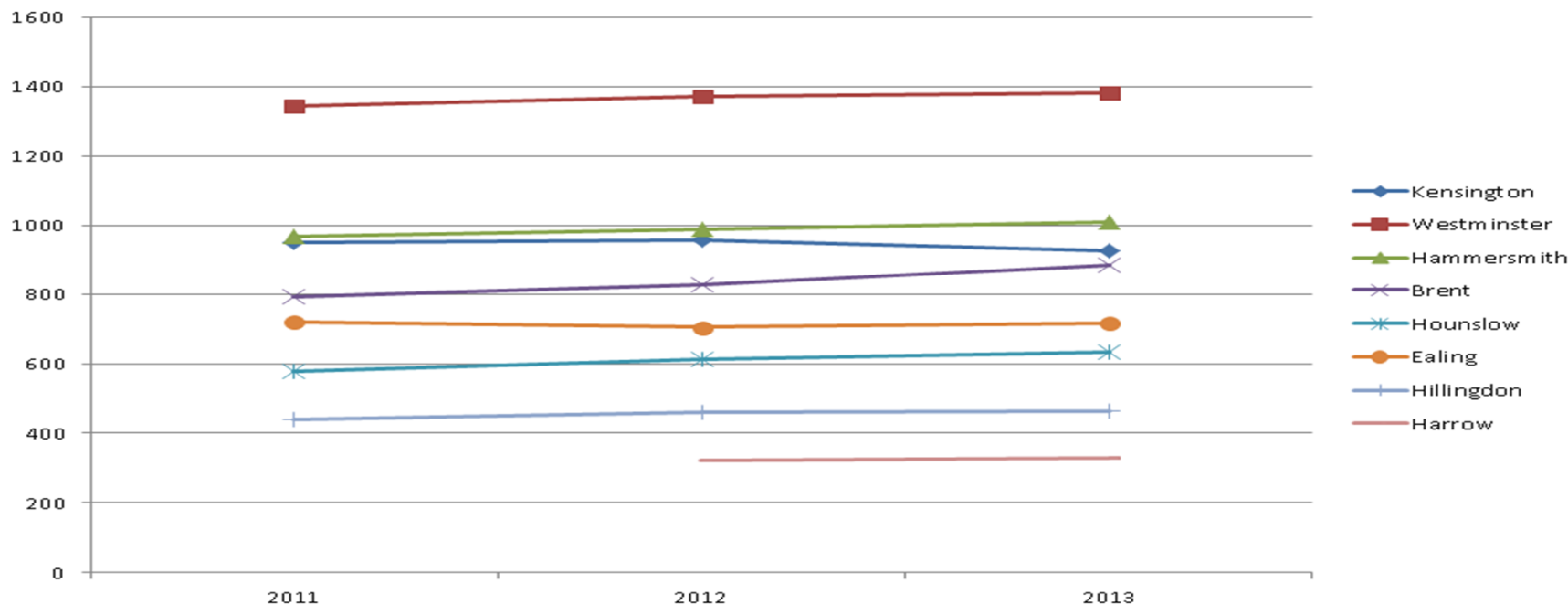


Source: Public Health England. New diagnoses of HIV and AIDS.



# HIV in Harrow – 2013 data

**Number living with diagnosed hiv infection 15-59**



- Most of the boroughs in North West London, **Harrow (2011 data missing)** have seen a slight rise in the number of people living with HIV over the last three years, only Ealing and K&C have seen a slight reduction.
- The main route of acquiring HIV infection in this group is through heterosexual sex.



# Action on Sexual Health in Harrow

- Currently leading on commissioning of sexual health (GUM) services across London (29 boroughs signed up so far)
- Integrated model combining family planning and GUM services
- Planned procurement of pan London sexual health promotion/HIV awareness
- Local home sampling/self testing for HIV Linked with Boots Chemists
- PHE promoting a national HIV home testing programme which started in November and runs to the end of January